



ANNIVERSARY 16763S



ANNIVERSARY 16763S

Model number: 31ANN16763SH19

3 beds • 2 baths • 1216 sq.ft. • 16' width • 76' depth

Our home building facilities invest in continuous product and process improvements. Plans, dimensions, features, materials, specifications and availability are subject to change without notice or obligation. Renderings and floor plans are representative likenesses of our homes and may differ from the actual homes. We invite you to tour a Home Center near you and inspect the highest value in quality housing available or call (281) 689-1408 to speak with a Home Consultant. Copyright 2017, CMH. All rights reserved.

<https://www.claytonhomesofeasttexas.com>

CLAYTON HOMES- SPLENDORA

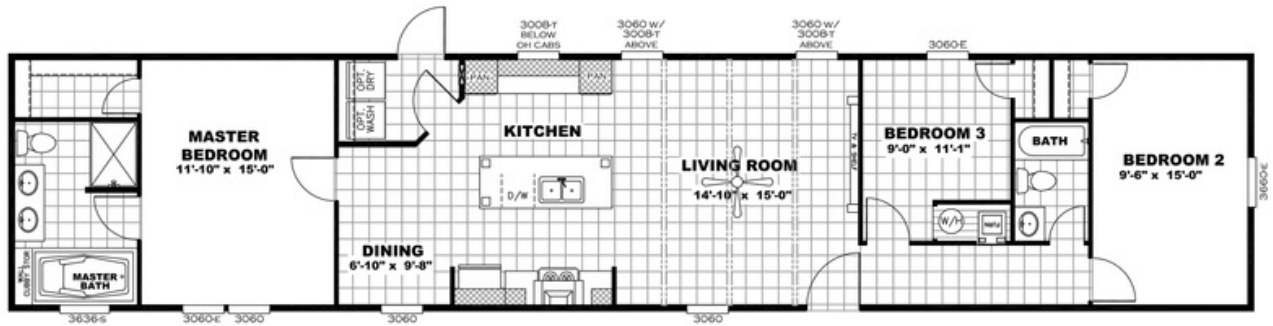
12793 HWY 59
SPLENDORA, TX 77372

Monday - Thursday: 9am to 6pm
Friday: 9am to 6pm
Saturday: 9am to 5pm
Sunday: Closed

(281) 689-1408



ANNIVERSARY 16763S



MODEL# ANN16763SH

DRAWING # 31-76S-TXANN

ALL WINDOWS ARE THERMAL PANE

ANNIVERSARY 16763S

Model number: 31ANN16763SH19

3 beds • 2 baths • 1216 sq.ft. • 16' width • 76' depth

Our home building facilities invest in continuous product and process improvements. Plans, dimensions, features, materials, specifications and availability are subject to change without notice or obligation. Renderings and floor plans are representative likenesses of our homes and may differ from the actual homes. We invite you to tour a Home Center near you and inspect the highest value in quality housing available or call (281) 689-1408 to speak with a Home Consultant. Copyright 2017, CMH. All rights reserved.

<https://www.claytonhomesofeasttexas.com>

CLAYTON HOMES- SPLENDORA

12793 HWY 59
SPLENDORA, TX 77372

Monday - Thursday: 9am to 6pm

Friday: 9am to 6pm

Saturday: 9am to 5pm

Sunday: Closed

(281) 689-1408